

uffix

EVO + collection

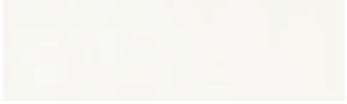


EVO + General features

STRUCTURE: manufactured in metallic tube with a rectangular 60x15 mm section, joined the metallic structures under the top which have a 50x15 mm section.

Both are varnished in epoxy powders in three finishes:

WHITE



LONDON GREY



BLACK



DESK and MEETING TABLES TOP: 16 mm thick furniture grade particleboards, available in the following finishes:

Platinum Oak

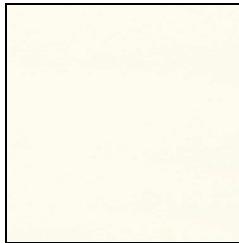


Thermowood oak



WOOD:

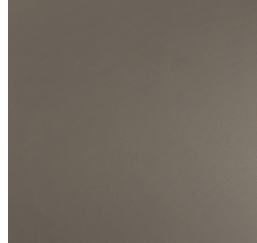
White



Tan



London grey



Black

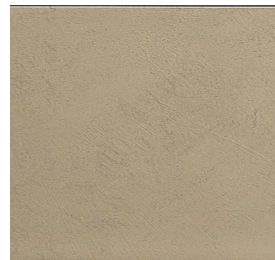


FENIX LAMINATE:

Cream



Silver



Sand



Graphite



CONCRETE ECO RESIN:

- Table dimensions: 180, 200, 240 and 300 cm
- Modesty panel with the same characteristics and finishes of the top
- Available as a single desk, with extension or with supporting credenza